

Half Moon Village Condominium  
c/o Sterling Services Inc.  
589 Concord Street  
Holliston, MA 01746  
(508) 429-2150 (508) 429-7989 (fax)

# Important Notice About Carbon Monoxide

Dear Fellow Unit Owners:

As you may be aware, the Massachusetts Legislature recently passed a law requiring carbon monoxide detectors in residential buildings containing any equipment which may emit carbon monoxide or which has parking facilities within the building. As relevant to us, the Regulations which have been developed under this law require each Unit Owner to install and approved device on each level of the Unit and within ten (10) feet of each sleeping area by March 31, 2006. [Basements and attics only need to have an alarm if finished and furnished for living purposes]. Unit Owners are required to inspect the detectors annually and, when selling their unit, will need a carbon monoxide alarm certificate. As with a smoke detector certificate, the new certificate can also be obtained by the fire department.

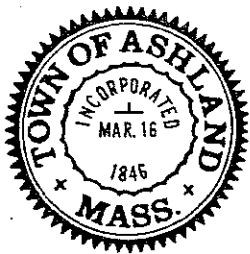
To comply with these new requirements, Unit Owners may install any of the following types of carbon monoxide alarms in the required locations:

1. Battery powered alarms;
2. AC plug-in powered alarm with battery back-ups;
3. Low voltage or wireless alarm systems; or
4. Combination smoke detectors and carbon monoxide alarms powered by battery or AC with battery back-up.

We hope this information will be helpful to you. Additionally, please find attached a check list for proper installation distributed by the Ashland Fire Department for both smoke and carbon monoxide detectors. Please note this information can also be found at [www.ashlandfire.com](http://www.ashlandfire.com). If you have any questions about the new law, please feel free to contact the fire department at [fireprevention@ashlandmass.com](mailto:fireprevention@ashlandmass.com).

Sincerely,

The Board of Trustees  
Half Moon Village Condominium



# Ashland Fire Department

## Fire Prevention / Code Enforcement



Ashland, Massachusetts 01721

WILLIAM KEE  
CHIEF OF DEPARTMENT

LT. ANTHONY DUCA

FF. MATTHEW BOLAND

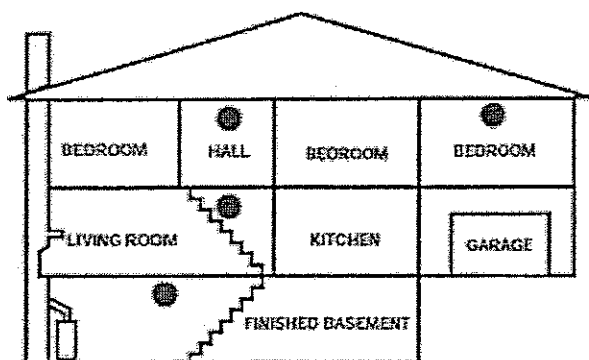
TEL 508-881-0132  
FAX 508-881-0133

### Ashland, Ma. Carbon monoxide Check off sheet (Residential Only)

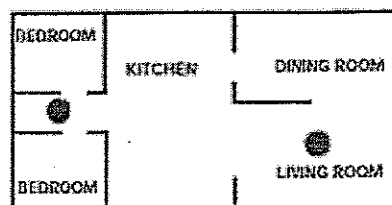
- A Single Station Carbon Monoxide Alarm shall be located in each level of each Dwelling Unit including habitable portions of basements, cellars and attics, but not including crawl spaces. The installation of said unit shall be in accordance with the manufacturer's instructions.

Habitable: Shall mean that portion of a cellar, basement or attic that is designed, used and furnished for living.

- When mounting a carbon monoxide alarm on a level of a Dwelling Unit with a sleeping area, the alarm shall be installed in the immediate vicinity of the sleeping area, not to exceed 10 ft. as measured in any direction from any bedroom door
- Carbon monoxide detectors can be battery, plug in with battery back-up or hard wired.
- Make sure the detector works properly. Make sure they are mounted securely
- Do not install in dead air spaces such as peaks of vaulted ceilings, or gabled roofs.
- Do not install in turbulent air from ceiling fans.
- Do not place near fresh air, heating, air condensing vents or close to doors and windows that open to the outside.
- Keep out of humid areas such as bathrooms.
- Do not install in temperature below 40 degs or above 100 degs
- Do not place behind curtains or furniture
- Do not locate alarm within 5 feet of any cooking appliance



MULTI-STORY RESIDENCE



SINGLE-STORY RESIDENCE, APARTMENT,  
MOBILE HOME

\*These are the minimum standard to comply 26F 1/2. Alternative Compliance options are available.